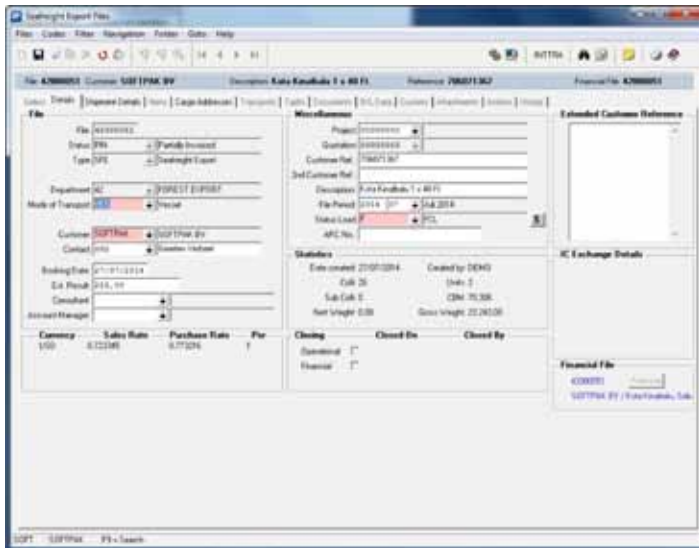


## Profor Forwarding System



### PROFOR Modules:

- Sea Freight Import (incl. consolidation)
- Sea Freight Export (incl. consolidation)
- Road Transport (incl. consolidation)
- Inter Modal Transports
- Air Freight Import (incl. consolidation)
- Air Freight Export (incl. consolidation)
- Cargonaut interface (MAWB and HAWB)
- Quotations and Contracts
- INTTRA interface (Booking Request and B/L Instructions)
- ProStore (warehousing) interface
- Customs interface - declarations
- Webportal

### Features:

- Invoicing incl. Contracts & Tariffs and e-Billing
- Registration of Purchase Invoices (budget control!)
- Attachments (PDF, E-mail, pictures can be linked to files, quotations and customers)
- Security settings for programs and data
- Management information via Crystal Reports, QlikView and Microsoft Excel
- Documents (file related, tailor made)
- Hardware independent – On-Site or in the Cloud

### Benefits:

- Integrated system with re-usable data from Quotation to invoicing
- Interface to external financial administrations (i.e.: Exact, Unit-4, AccountView, SAP)
- Integration with other Softpak modules (ProStore – Warehousing, ProFin – Financial or CDS – Customs declarations)
- File estimates and realized amounts for result monitoring
- 3 releases per year
- Patches downloadable from internet
- Helpdesk – professional support to operational employees when using ProFor

### Softpak

- Supplies customs- and port related software for Customs- and Freight Forwarders, Liner & Liner Agency companies, Logistics Services (Warehousing), Container Terminals and Depots.
- Supports 250 customers in larger ports in The Netherlands and abroad with more than 30 employees.